

FILED FOR RECORD
MARTIN COUNTY, FLA.

79 AUG 20 49:45

LOUISE V. ISAACS
CLERK OF CIRCUIT COURT
BY _____ D.C.

FED. ROAD DIV. NO.	STATE	F A PROJECT NO.
3	FLA.	

THIS IS TO CERTIFY THAT THE WITHIN AND ATTACHED SHEETS NUMBERED ONE (1) TO TWO(2), INCLUSIVE, CONSTITUTE A TRUE COPY OF THE OFFICIAL RIGHT OF WAY MAP SHOWING LOCATION AND SURVEY BY THE STATE OF FLORIDA DEPARTMENT OF TRANSPORTATION FOR A PORTION OF STATE ROAD AIA 'LEG A', DESIGNATED AS SECTION 89030 IN MARTIN COUNTY, FLORIDA.

THE PROPERTY OUTLINED IN RED INK, AND LABELED MAINT. R/W LINE ON SAID SHEETS HAS BEEN VESTED IN THE STATE OF FLORIDA DEPARTMENT OF TRANSPORTATION, PURSUANT TO THE PROVISIONS OF SECTION 95.361 FLORIDA STATUTES.

IN WITNESS WHEREOF, WE HAVE HEREUNTO SET OUR HANDS AND AFFIXED THE SEAL OF THE STATE OF FLORIDA DEPARTMENT OF TRANSPORTATION, AT TALLAHASSEE, FLORIDA, THIS 14th DAY OF Aug. A.D. 1979.

THIS IS TO CERTIFY THE RIGHT-OF WAY LIMITS AS SHOWN ON THIS MAP HAVE BEEN MAINTAINED CONTINUOUSLY FOR FOUR (4) YEARS WITHOUT INTERRUPTION OR DISTURBANCE BETWEEN MILE POSTS 50.000 AND 51.335 (S.L.D.)

MAINTENANCE ENGINEER

William L. Rose

SECRETARY OF TRANSPORTATION,
STATE OF FLORIDA DEPARTMENT
OF TRANSPORTATION

Conolly Senaldi

EXECUTIVE SECRETARY,
STATE OF FLORIDA DEPARTMENT
OF TRANSPORTATION

ACCEPTED FOR FILES AND RECORDED IN THE PUBLIC RECORDS OF MARTIN COUNTY, FLORIDA, THIS 20th DAY OF August A.D. 19 79 IN RIGHT OF WAY ROAD PLAT BOOK 7 PAGE 92.

THIS MAP FILED UNDER 89000
ENGINEERING FOLDER MISC. # 9

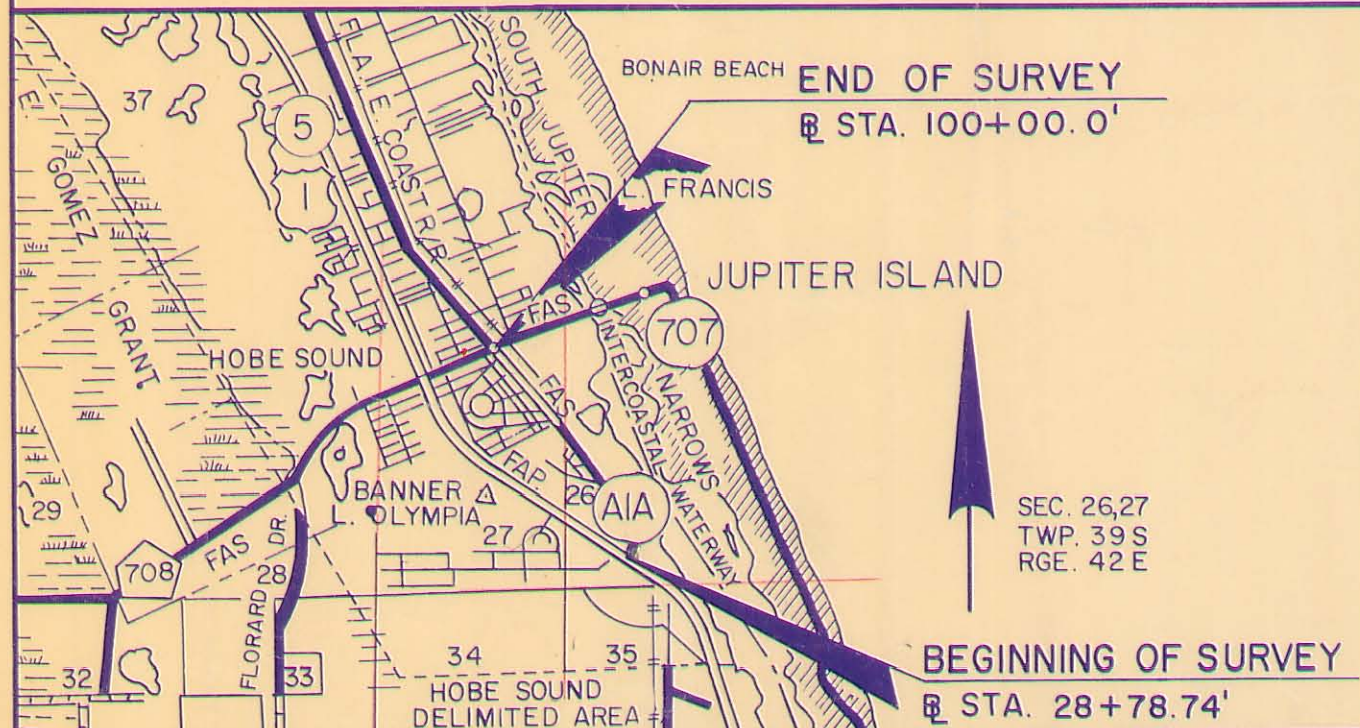
File #350672

Louise V. Isaacs

CLERK OF CIRCUIT COURT OF

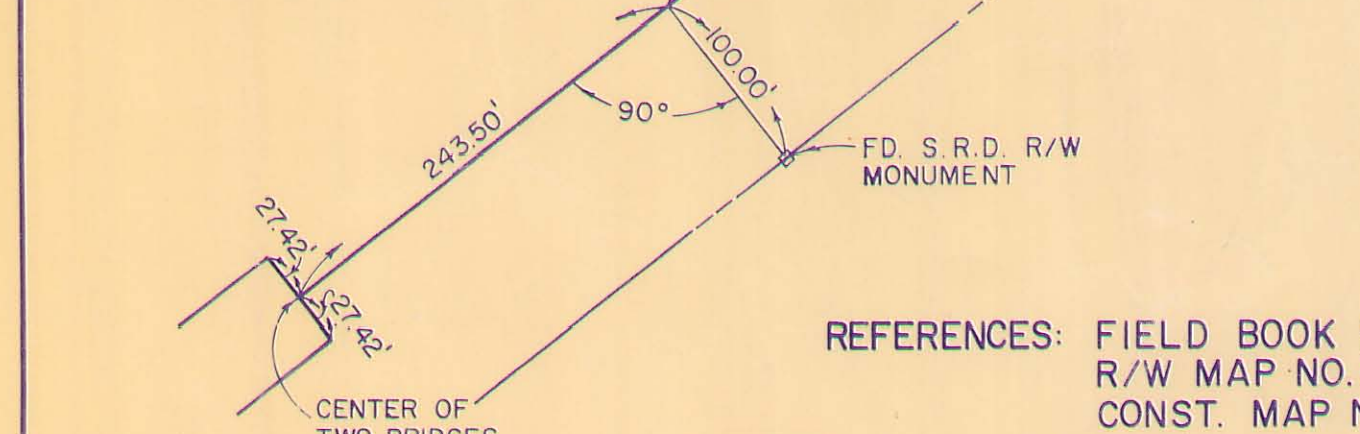
Martin COUNTY, FLORIDA

By Charlotte Burkey, D.C.



LOCATION MAP SCALE: 1"=1 MILE

MAINT. R/W DATA	R/W LEFT	RIGHT
29+75.4	47.0	47.0
30+00.0	44.0	35.0
31+00.0	44.0	35.0
32+00.0	44.0	35.0
33+00.0	44.0	35.0
34+00.0	44.0	35.0
35+00.0	44.0	35.0
36+00.0	44.0	35.0
37+00.0	44.0	35.0
38+00.0	44.0	35.0
39+00.0	44.0	35.0
40+00.0	44.0	35.0
41+00.0	44.0	35.0

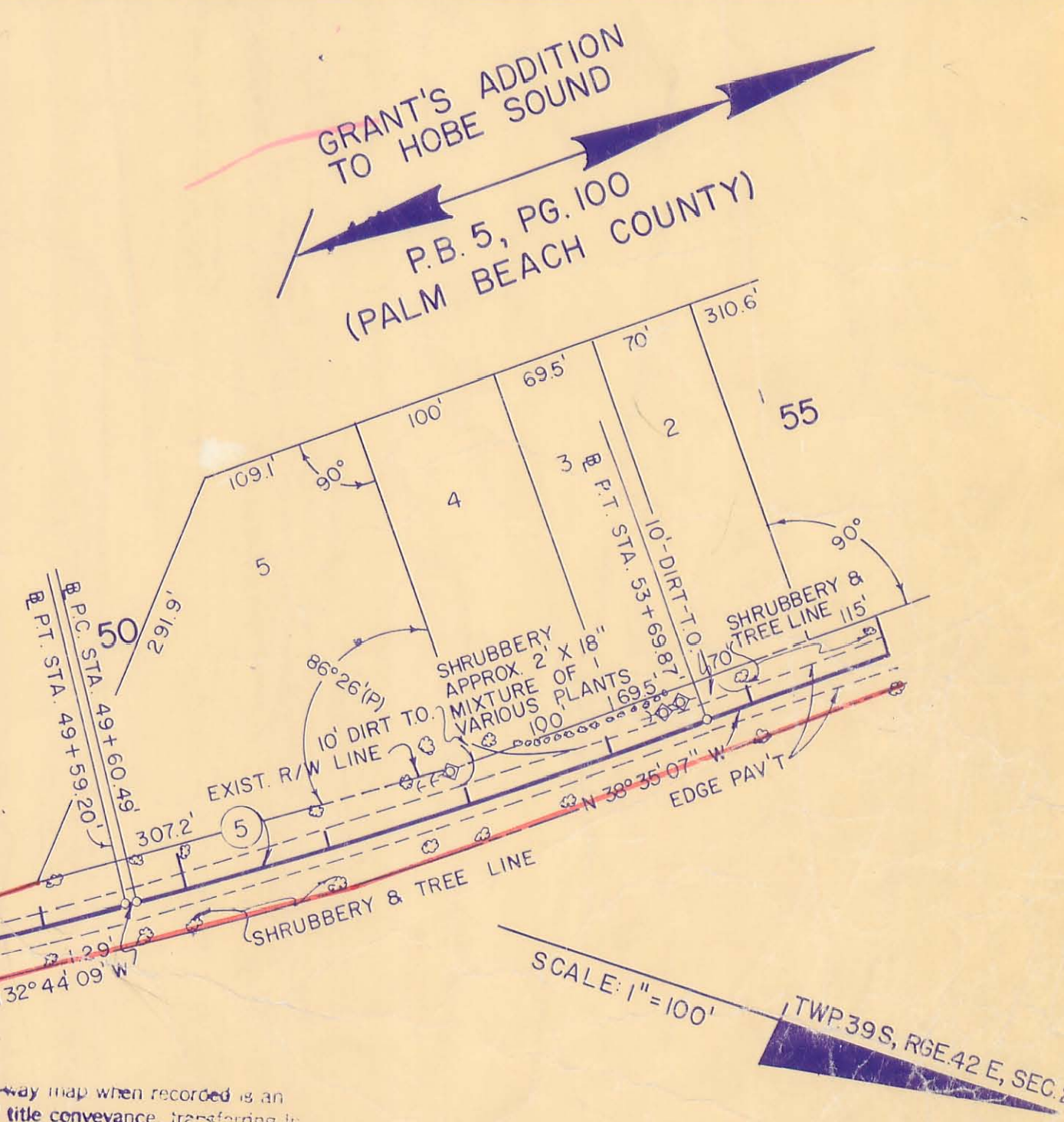


NOTE: B BEARING WAS TAKEN FROM D.O.T. R/W MAP 89010-2113

MAINT. R/W DATA	R/W LEFT	RIGHT
28+78.74	22.0	26.0
29+00.0	22.0	26.0
30+00.0	22.0	26.0
31+00.0	22.0	26.0
32+00.0	22.0	26.0
33+00.0	22.0	26.0
34+00.0	22.0	26.0
35+00.0	22.0	26.0
36+00.0	22.0	26.0
37+00.0	22.0	26.0
38+00.0	22.0	26.0
39+00.0	22.0	26.0
40+00.0	22.0	26.0
41+00.0	22.0	26.0

CURVE DATA NO. 1	CURVE DATA NO. 2	CURVE DATA NO. 3
P.I. STA. 34+91.59'	P.I. STA. 37+60.94'	P.I. STA. 40+10.59'
$\Delta = 07^{\circ} 33' 22''$ RT.	$\Delta = 67^{\circ} 31' 07''$ LT.	$\Delta = 08^{\circ} 42' 35''$ RT.
T = 67.01'	T = 127.71'	T = 74.96'
R = 1014.79'	R = 191.07'	R = 984.29'
L = 133.83'	L = 225.16'	L = 149.63'
D = 05^{\circ} 38' 46''	D = 29^{\circ} 59' 12''	D = 05^{\circ} 49' 16''

CURVE DATA NO. 4	CURVE DATA NO. 5
P.I. STA. 48+16.69'	P.I. STA. 51+65.36'
$\Delta = 03^{\circ} 06' 07''$ LT.	$\Delta = 05^{\circ} 50' 56''$ LT.
T = 142.58'	T = 204.87'
R = 5265.90'	R = 4009.92'
L = 285.09'	L = 409.38'
D = 01^{\circ} 05' 17''	D = 01^{\circ} 25' 44''



STATE OF FLORIDA
DEPARTMENT OF TRANSPORTATION
MAINTENANCE MAP

STATE ROAD NO. AIA 'LEG A' MARTIN COUNTY

BY GRESHAM DATE 7-12-79

CHECKED GRAY DATE 7-12-79

COMPARED _____

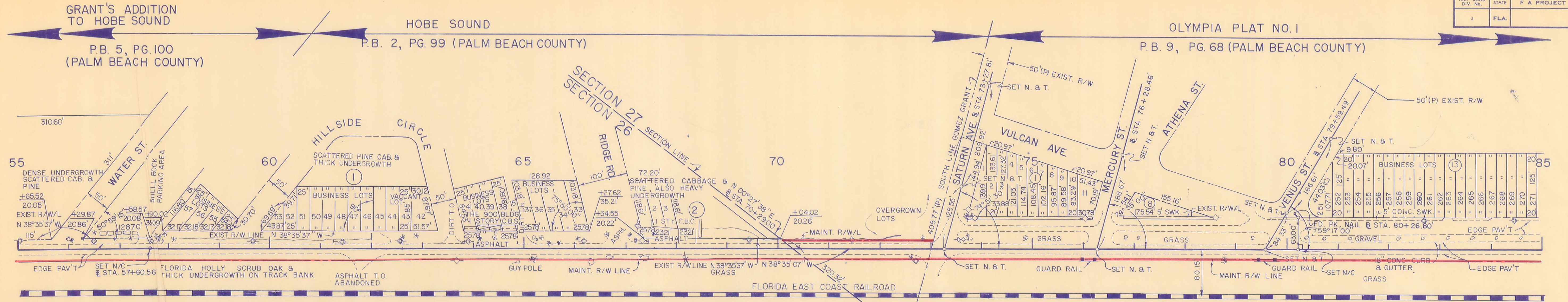
INDEXED _____

REVISION _____

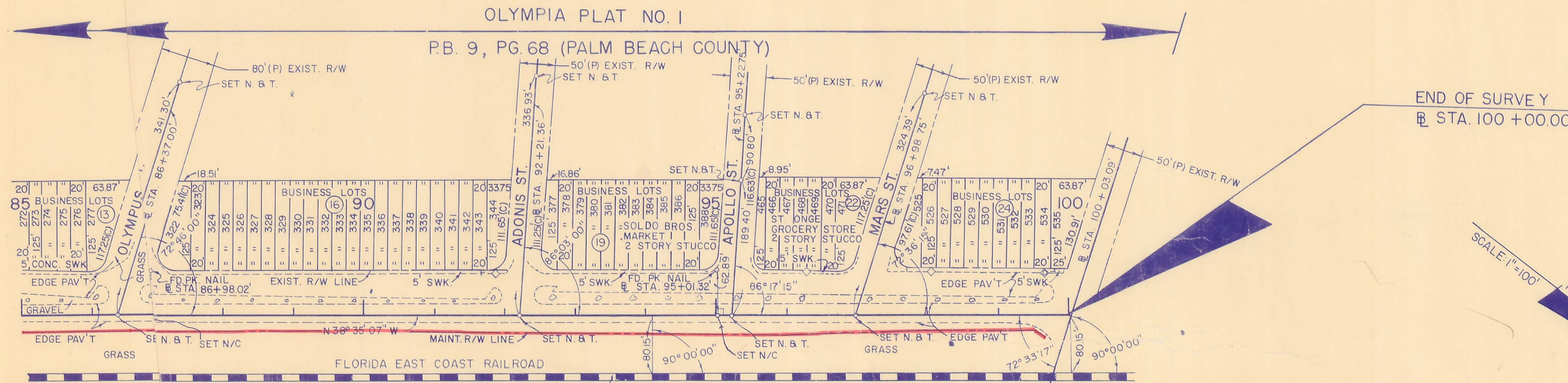
BY _____ DATE _____

SECTION 89030 SHEET 1 OF 2

FED. ROAD DIST. NO.	STATE	F A PROJECT NO.	FISCAL YEAR	SHEET NO.
3	FLA.			



MAINT. R/W DAT	LEFT	RIGHT
56+00'		23.0'
58+00'		23.0'
60+00'		23.0'
62+00'		22.0'
64+00'		20.0'
66+00'		20.0'
68+00'		20.0'
70+00'	16.0'	18.0'
72+00'	16.0'	20.0'
74+00'		20.0'
76+00'		20.0'
78+00'		20.0'
80+00'		20.0'
82+00'		21.0'
84+00'		23.0'



MAINT. R/W DAT	LEFT	RIGHT
86+00'		23.0'
88+00'		23.0'
90+00'		23.0'
92+00'		23.0'
94+00'		23.0'
96+00'		23.0'
98+00'		23.0'
100+00'		23.0'

NOTE:
RADIUS ON CIRCULAR LOTS CORNERS ARE
25 FEET UNLESS OTHERWISE NOTED.
ALL LOT DIMENSIONS ARE PLAT DIMENSIONS
UNLESS OTHERWISE NOTED.

STATE OF FLORIDA DEPARTMENT OF TRANSPORTATION			
MAINTENANCE MAP			
STATE ROAD NO. A1A LEG A		MARTIN COUNTY	
DRAWN	BY	DATE	APPROVED BY
TRACED	GRESHAM	7-12-79	
CHECKED	GRAY	7-12-79	
COMPARED			
INDEXED			
SECTION 89030		SHEET 2 OF 2	